



# the meads business centre

Fully refurbished office suites in Farnborough town centre with private parking



Up to 20,000 sq ft  
available in office suites  
from 400 sq ft upwards

Flexible terms

Available for  
immediate occupation



A joint venture regenerating Farnborough town centre

[www.themeads.co.uk](http://www.themeads.co.uk)

SALHIA 

 ST.MODWEN



# the meads business centre

Fully refurbished office suites in Farnborough  
town centre with private parking



## The Meads Business Centre

The Meads Business Centre has a prime location within Farnborough's regenerated town centre, in the heart of the shopping centre and close to the station.

The Meads is Farnborough's vibrant office, retail, leisure and residential destination. Leading occupiers in the town centre include Sainsbury's, Debenhams, ASDA and Travelodge who are capitalising on the affluent catchment of 194,000 people.

### Specification

- Suites from 400 to 7000 square feet per floor
- Substantial on-site parking
- Air conditioning
- Category II lighting and Category V computer cabling
- Broadband internet access
- Full business centre services: telephone, furniture, meeting rooms
- Break out areas
- Fully fitted kitchens
- 24/7 electronic access
- On-site security and reception

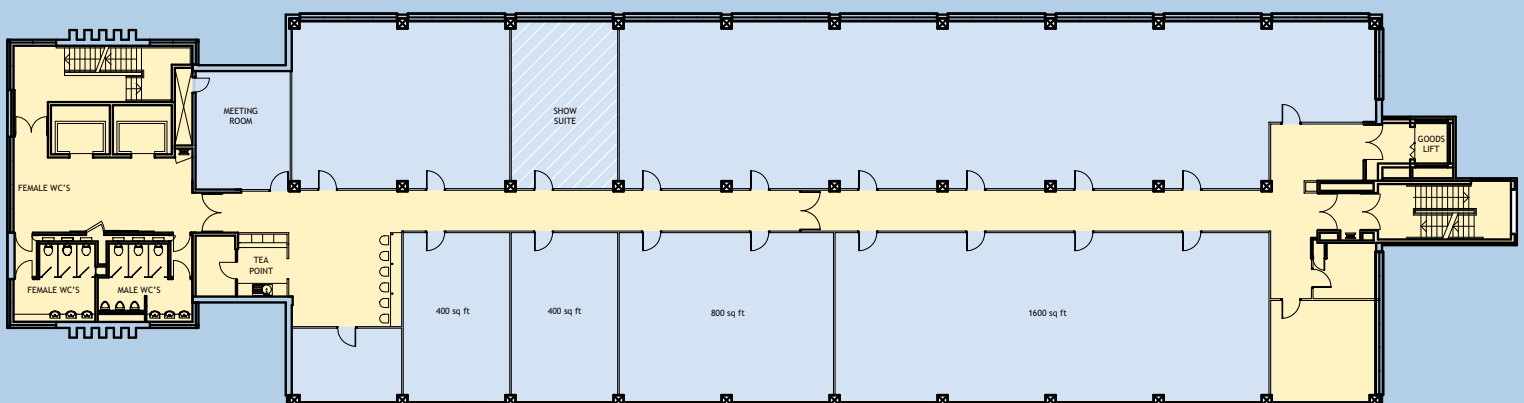
### Terms

- Highly competitive inclusive rents
- Flexible lease lengths from 3 months to 10 years
- Low start up costs

### Contact

For more information contact  
Lisa Rollings, The Meads Business  
Centre Manager on **01252 511870**  
or email [lrollings@stmodwen.co.uk](mailto:lrollings@stmodwen.co.uk)

### Typical floor layout



Plan shows sample office layouts only

## The Meads Business Centre Location

Close to Junction 4 of the M3.

A short walk to the railway station where there are regular services connecting London Waterloo (35-50 minutes) and the surrounding area.

The main town centre bus station is a few minutes walk away from reception.

Business Centre reception can be accessed from the ground floor of the shopping centre and third floor of the multi storey car park.



## Contact

For more information contact  
Lisa Rollings, The Meads Business  
Centre Manager on **01252 511870**  
or email **lrollings@stmodwen.co.uk**

Or contact Jeremy Nokes  
at Hollis Hockley on **01252 545848**,  
or email **jjn@hollishockley.co.uk**



The Meads Business Centre, Kingsmead,  
Farnborough, Hampshire GU14 7SJ

**www.themeads.co.uk**



### Misrepresentation Act

Whilst every care is taken in the preparation of these particulars, Hollis Hockley, any joint agents involved and the vendor take no responsibility for any error, mis-statement or omission in these details. Measurements are approximate and for guidance only. These particulars do not constitute an offer or contract and members of the Agent's firm have no authority to make any representation or warranty in relation to the property. Imagery and photography are indicative to The Meads and the Farnborough area.

A joint venture regenerating Farnborough town centre

SALHIA 

 ST.MODWEN